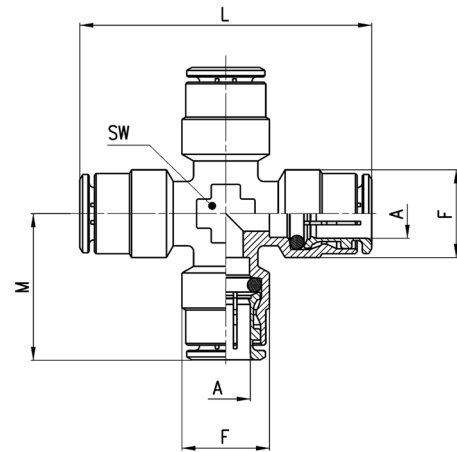


Raccordi Mod. 6600

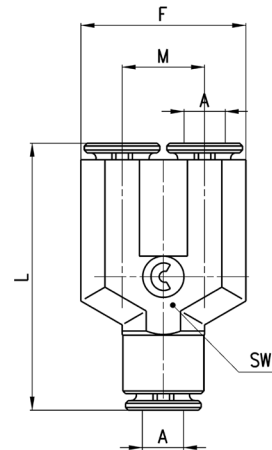
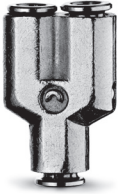
Intermedio a Croce



DIMENSIONI						
Mod.	A	F	L	M	SW	Peso (g)
<b>6600 4</b>	4	9	38	19	9	26
<b>6600 5</b>	5	10	41	20.5	9	29
<b>6600 6</b>	6	12.7	44	22	10	35
<b>6600 8</b>	8	14.2	49	24.5	12	50
<b>6600 10</b>	10	16.5	55	27.5	14	63
<b>6600 12</b>	12	19.5	56	28	16	84

Raccordo Mod. 6560 Micro

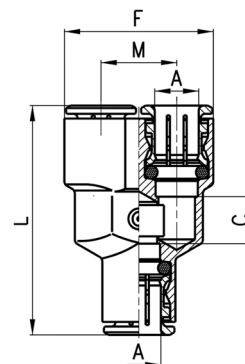
Y Intermedio



DIMENSIONI						
Mod.	A	F	L	M	SW	Peso (g)
<b>6560 3</b>	3	12	20.4	6	6	5

Raccordi Mod. 6560

Y Intermedio



DIMENSIONI						
Mod.	A	C	F	L	M	Peso (g)
<b>6560 4</b>	4	5	18	33	9	19
<b>6560 6</b>	6	7	24.5	39	12.5	30
<b>6560 8</b>	8	9	28.5	44	14.5	42
<b>6560 10</b>	10	15.5	32	53.5	16	63